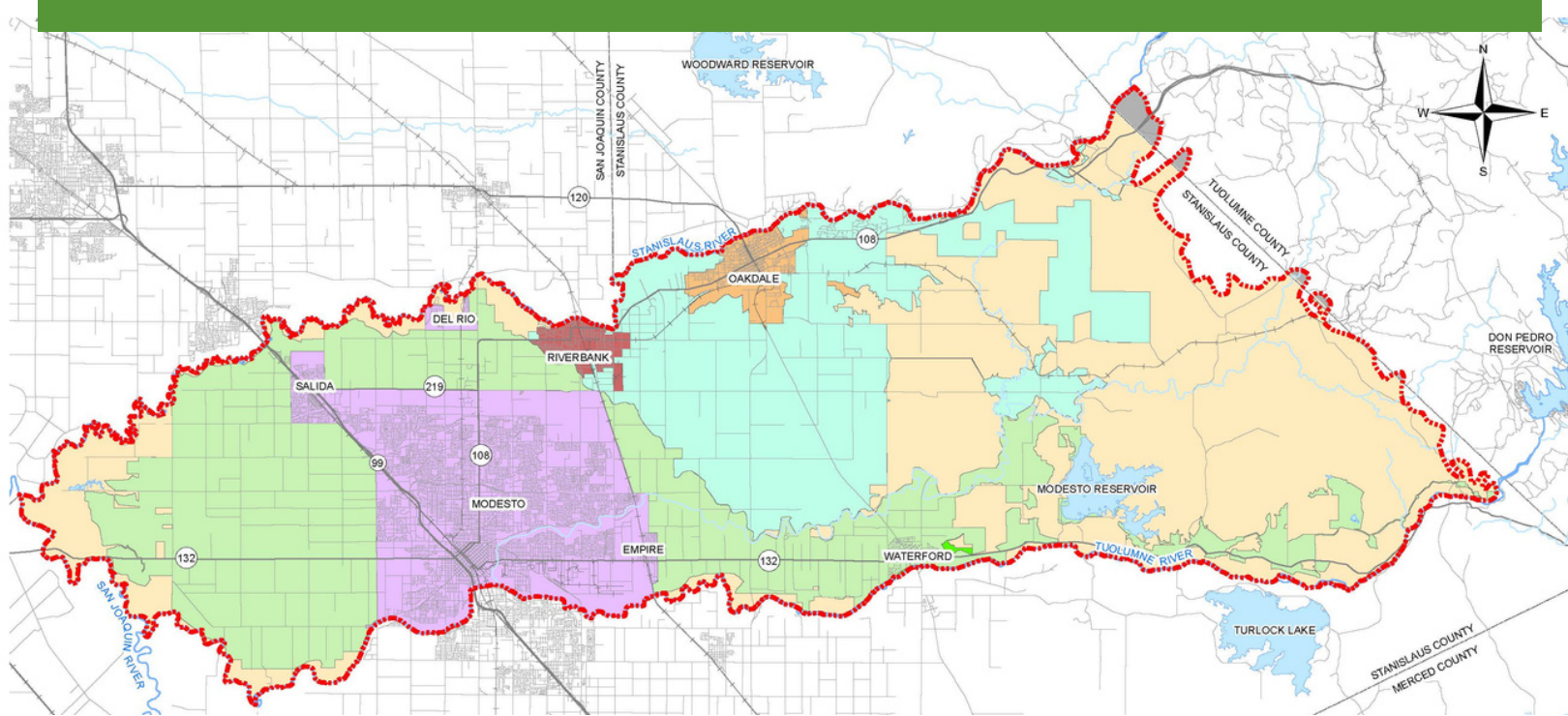


ACHIEVING SUSTAINABILITY IN THE MODESTO SUBBASIN THROUGH MID'S GROUNDWATER REPLENISHMENT PROGRAM

Modesto Irrigation District's Long-Term Groundwater Replenishment Program and Department of Water Resources Incomplete Determination Overview



BACKGROUND



Learn more about STRGBA GSA

The Modesto Subbasin covers approximately 250,000 acres in Stanislaus County lying between the Tuolumne, Stanislaus, and San Joaquin Rivers. The seven agencies covering the Modesto Subbasin formed the Stanislaus and Tuolumne Rivers Groundwater Basin Association Groundwater Sustainability Agency (STRGBA GSA). STRGBA GSA has the authority and responsibility to manage the groundwater basin and submitted Modesto Subbasin's Groundwater Sustainability Plan (GSP) to the Department of Water Resources (DWR) on January 31, 2022. Almost two years later on January 18, 2024, DWR determined the GSP to be incomplete. The STRGBA GSA has 180 days (no later than July 16, 2024) to address the identified deficiencies by DWR in the Modesto Subbasin GSP.

WHAT DOES THE INCOMPLETE DETERMINATION MEAN?



Read DWR's January 2024 letter

The deficiencies outlined by DWR can be summarized in two points:

1. The subbasin needs a domestic well mitigation program. This type of program would provide for replacement of domestic wells impacted by declining groundwater levels.
2. The subbasin needs a backstop. If the projects and management actions either (a) don't materialize and/or (b) don't materialize in the magnitude predicted, what will the subbasin do to mitigate unsustainable groundwater extraction. This requires the establishment of a demand management program. Demand management can take many different forms - following, idling, multi-benefit land repurposing, or implementation of a groundwater allocation.

GSP PROJECTS

One of the projects in the GSP was the use of surface water from Modesto Irrigation District (MID) when available and at no impact to existing MID ag and urban customers.

LONG-TERM GRP KEY TERMS

- Complete and submit GRP application to MID, including a \$1,000 non-refundable application fee.
- Applications will be accepted on a first come, first serve basis for the first 50% of available water. The remaining water will be held in reserve for distribution on a parity basis for applications received in the first 30 days after the determination is made.
- Landowner will be responsible for paying for, securing and constructing any and all necessary permits and infrastructure needed.
- Landowner must abide by MID's Irrigation Water Rules and Regulations.
- 20-year, voluntary program.
- Must be used in the Modesto Subbasin.

MID IN-KIND SERVICES

- List of grant and funding resources.
- Construction inspections of installed infrastructure.

For more information, contact MID's Water Operations Department at **(209) 526-7562** or visit **mid.org**.

MID'S LONG-TERM GROUNDWATER REPLENISHMENT PROGRAM - THE KEY TO SUSTAINABILITY IN THE MODESTO SUBBASIN

On August 8, 2023, the MID Board of Directors approved a long-term Groundwater Replenishment Program (GRP) for the Modesto Subbasin. The GRP is a voluntary, **20-year program** open to **all water users in the Modesto Subbasin**. In wet years where MID irrigators and the City of Modesto have received full uncapped allocations, MID may make surface water available to applicants.

RELIABILITY

Long-Term GRP criteria could be met in 52% of water year types.

PRICING

Conjunctive Use Water - \$125/per acre-foot

Coordinated use of surface and groundwater supplies to maximize overall water resources and assist in improving overall health of Modesto Subbasin.

In-Lieu Water - \$200/per acre-foot

Replenishment water used for agricultural irrigation purposes only. The minimum amount of In-Lieu water required to purchase is 12 inches.

UPCOMING INFORMATIONAL MEETINGS

Tuesday, April 23 - 5:30 p.m.

MID Board Room - 1231 11th Street, Modesto

Wednesday, April 24 - 5:30 p.m.

Waterford City Hall - 101 E Street, Waterford

These meetings will be held during MID Board meetings and will be available online. For details on how to view online, visit:

www.mid.org/about/board/agenda.



MID's Long-Term GRP Application and Agreement available here

